

Portfolio





Together for health

Ziacom® has been working for more than 20 years to improve the **oral health** and well-being of patients around the world by **designing and manufacturing innovative**, high-quality dental implant, prosthetic component, surgical instrument and biomaterial solutions.

The company was founded in 2004 with **100% Spanish capital** and began its activity as a manufacturer of dental implants and attachments for several European companies before later launching its own **brand of implant systems** in 2006.

Ziacom® quality

Commitment to **quality and innovation** has been part of the values and the essence of Ziacom® since the beginning.

That is why we use state-of-the-art technology in **every stage of our products' production cycle**, from **design and manufacture to quality assurance, cleaning and packaging**. All of our products are also manufactured using only **high-quality raw materials** after applying **strict controls to select** our main suppliers.

Ziacom Medical SL is a **licensed manufacturer of medical devices** and the **marketing authorisation** 6425-PS from the AEMPS (Spanish Agency for Medicines and Medical Devices) as well as our **quality management system are certified** in accordance with

In 2015, Ziacom® introduced its **diversification strategy** with the development of **new business lines** and new product lines and the launch of a **new portfolio**, which helped the company achieve a **15% share of the Spanish market** in 2016 with the sale of more than 230,000 implants.

In 2022, the company started up an **ambitious growth plan** with new goals of **international expansion**, broadening and **diversification** of its portfolio **of products and services** and a change in corporate identity.

the requirements of ISO standards 9001:2015 and 13485:2018, and is also GMP 21 CFR 820 compliant.



Thanks to our ceaseless endeavours to offer our clients unsurpassable quality, all our implants have a **lifetime guarantee**.

See the General Conditions for Accessing the Guarantee for Ziacom® products.

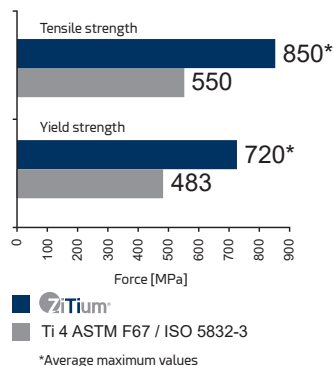
The Company

Zitium® titanium

We ensure maximum quality by making all of our implants from **extra-high-strength, grade 4 Zitium® titanium**, which gives them a **substantially improved yield strength and mechanical properties**.

Thanks to **Zitium® titanium**, our implants meet the requirements of ASTM F67 and ISO 5832-3 and are certified in accordance with Council Directive 93/42/EEC and its amendment Directive 2007/47/EC by notified body 0051.

Properties of Zitium® titanium



Ziacom® implants are all sterilised using beta ray radiation at 25 kGy, apart from the DSQ orthodontic implants, which are supplied **unsterilised**.



FDA Approved

*See approved models

IMPORTANT

All the products (except dental implants) listed in this Ziacom® catalogue are supplied unsterilised and must be sterilised before use.



Investment in innovation and training

In order to always offer the very best solutions for the **well-being of every patient**, and thanks to the experience and dedication of our **highly-qualified professionals** and **innovative Technological Centre**, our R&D&I team works incessantly in the field of **research and innovation** to **improve** our products and develop **new solutions** to meet the demands and needs of both patients and dentists.

We also invest in **research** and **ongoing training** as a way of providing **scientific support to the sector** and we firmly believe in training **young professionals** to best ensure **advances in the dentistry field**.

We therefore work closely with **training centres, universities and scientific bodies** to create a practical and specialised teaching environment to promote and strengthen their knowledge, abilities and professional growth.

In order to enhance our investment in the training and **development of dental professionals**, we have **specific areas at our facilities** for **hands-on training and practicals, state-of-the-art training equipment** and also a **physical and virtual showroom** where professionals can see all our dental solutions first hand.

Ziacom® around the world

We are committed to making oral health available to patients all over the world and have a solid **internal growth and expansion plan** to increase the company's **international presence** in those **areas where our products are already well-established** and to **expand into new areas**.

In order to achieve this, we offer our **international associates** a **trusting and collaborative** partnership by adapting to their **local needs** and providing solutions that are specific to each market.

As part of our commitment to meet the specific **quality, regulatory and legal requirements of each country**, for both the registration and distribution of our products, we have **specific certifications** from each of the countries in which we trade.

Regional headquarter

Ziacom Medical SL

Madrid - ESPAÑA
Calle Búhos, 2 - 28320 Pinto
Tel: +34 91 723 33 06
info@ziacom.com

Subsidiaries

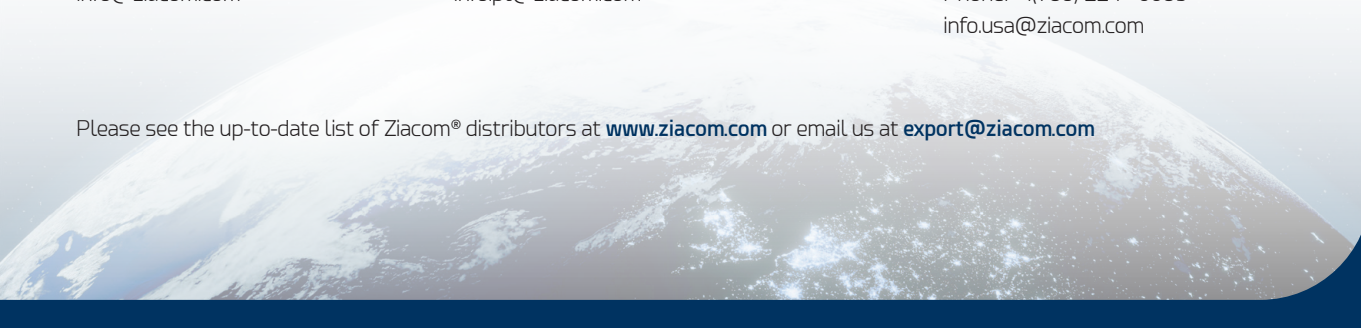
Ziacom Medical Portugal Lda

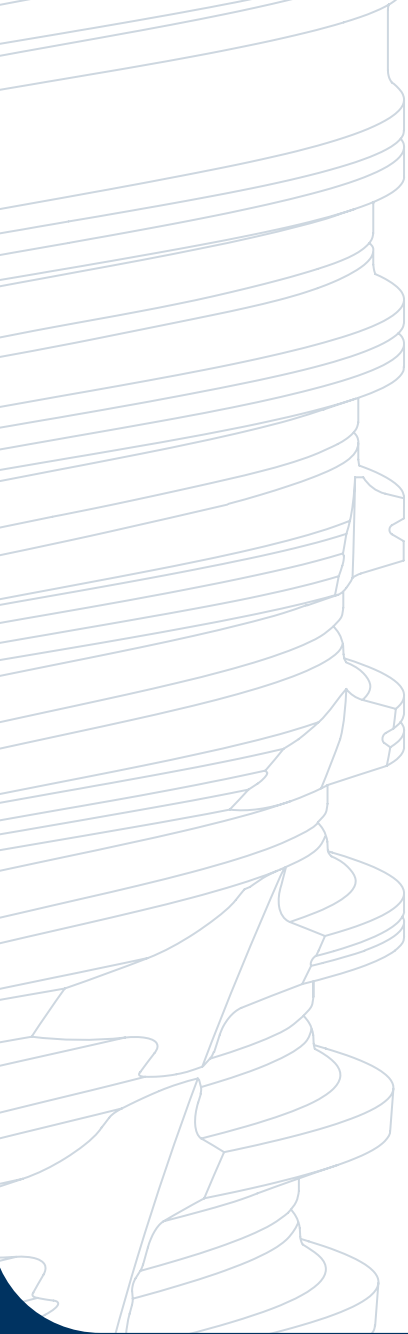
Av. Miguel Bombarda, 36 - 5° B
1050 -165 - Lisboa - PORTUGAL
Tel: +351 215 850 209
info.pt@ziacom.com

Ziacom Medical USA LLC

Miami - EEUU
333 S.E 2nd Avenue, Suite 2000
Miami, FL 33131 -USA
Phone: +1(786) 224 - 0089
info.usa@ziacom.com

Please see the up-to-date list of Ziacom® distributors at www.ziacom.com or email us at export@ziacom.com





Portfolio

Conical connection implants

Ø DIAMETER	Ø PLATFORM	LENGTH (L)						
		6	7	8.5	10	11.5	13	14.5
RP 3.40	2.85							
RP 3.70								
RP 4.00								
RP 4.30								
RP 4.80								

Dimensions in mm.

IMPORTANT

For further information and recommendations for use, see the catalogue.

CONNECTION

- 11° conical connection with double internal hex.
- Single platform for all diameters.
- Platform switch.

CORTICAL ZONE

- Microrings.
- Inverted cone cortical macro-structure.

CONICAL BODY

- Double threaded.
- Variable geometry:
 - » Coronal - thick trapezoidal thread.
 - » Middle - thinner trapezoidal thread.
 - » Apex - V-shaped thread.

APEX

- Oblique apical windows.
- Self-tapping active apex.
- Atraumatic rounded apex.

GALAXY



11° conical connection with double internal hex



Active apex

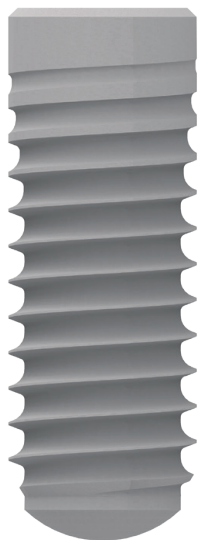
Surface treatment

Titanium
Titanium
Active



Dental implants

ZV2



11° conical connection
with double internal hex



Atraumatic apex

Surface treatment

Titansure

Conical connection implants

Ø DIAMETER	Ø PLATFORM	LENGTH (L)				
		6	8	10	12	14
■ RP 3.40	2.85					
■ RP 4.10						
■ WP 4.80	3.85					

Dimensions in mm.

IMPORTANT

For further information and recommendations for use, see the catalogue.

CONNECTION

- 11° Morse taper connection with double internal hex
- Tapered seal
- Tapered friction
- RP and WP platform
- Platform switch.

CORTICAL ZONE

- Shoulder designed for crestal placement.
- Slightly tapered core in the coronal region.
- Thread reduces towards the platform
- 0.20 mm bevel (apart from the 3.40 mm diameter implant, which has a 0.15 mm bevel)

BODY

- Active threads with 0.80 mm thread pitch.
- Optimised cylindrical morphology.
- Atraumatic apex.

CYLINDRICAL DESIGN

- Versatile, appropriate for all positions.
- Available in narrow 3.40 mm diameter
- Morphology allows for surgical compatibility

Conical implants with internal hex connection

Zinic[®]MT

Ø DIAMETER	Ø PLATFORM	LENGTH (L)						
		6	7	8.5	10	11.5	13	14.5
● NP 3.30	3.20							
● RP 3.60	3.50							
● RP 4.00								
● RP 4.40								
● WP 4.80	4.50							

Dimensions in mm.

IMPORTANT

For further information and recommendations for use, see the catalogue.

CONNECTION

- Internal hex connection.
- Depth of the prosthesis hex 1.5 mm.
- Tapered bevel.
- Tapered friction
- Platform switch.

CORTICAL ZONE

- Microthread design: preserves marginal bone.
- Microthread extension.
- Macro-structure.

BODY

- Reduced-angle active threads
- Double threaded.
- Self-tapping active apex.
- Perpendicular apical windows.
- Optimised morphology.
- Atraumatic apex.

CONICAL DESIGN

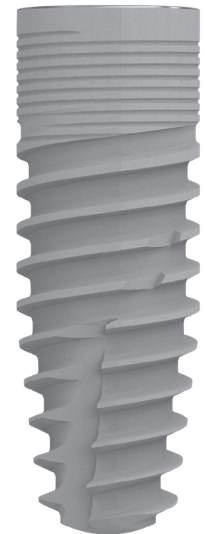
- Facilitates shaping in low density bone.
- Indicated for immediate loading.
- Indicated for cases of apical convergence and/or collapse.

Internal hex prosthetic connection

Active apex

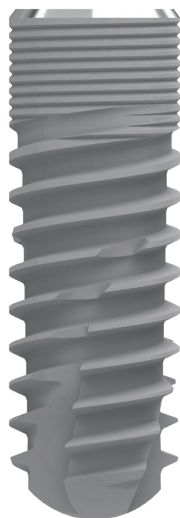
Surface treatment

Titanasure
Titanasure
Active

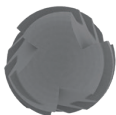


Dental implants

Zinic®



Internal hex prosthetic connection



Active apex

Surface treatment

Titaniumsure

Implant with internal hex connection

Ø DIAMETER	Ø PLATFORM	LENGTH (L)				
		8.5	10	11.5	13	14.5
● NP 3.30	3.20					
● RP 3.70	3.50					
● RP 4.00						
● RP 4.30						
● WP 4.60	4.50					
● WP 5.00						

Dimensions in mm.

IMPORTANT

For further information and recommendations for use, see the catalogue.

CONNECTION

- Internal hex connection.
- Depth of the prosthesis hex: 1.5mm.
- Tapered bevel.
- Tapered friction
- Platform switch.

CORTICAL ZONE

- Microthread design
- Microthread extension.
- Macro-structure.
- 0.2 mm machined segment on bevel

BODY

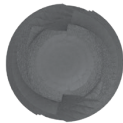
- Reduced-angle active threads
- Double threaded.
- Self-tapping active apex.
- Perpendicular apical windows.
- Optimised morphology.
- Atraumatic apex.

ZM4_{MT}

Implant with external hex connection



External hex prosthetic connection



Active apex

Surface treatment

Titaniumsure

Ø DIAMETER	Ø PLATFORM	LENGTH (L)						
		6	7	8.5	10	11.5	13	14.5
■ NP 3.30	3.30							
■ RP 3.60	4.10							
■ RP 4.00								
■ RP 4.40								
■ WP 4.80	5.00							

Dimensions in mm.

IMPORTANT

For further information and recommendations for use, see the catalogue.

CONNECTION

- External hex connection
- Screw channel with upper guide

CORTICAL ZONE

- Machined 0.4mm ring
- Microthread design
- Microthread extension.
- Macro-structure.

BODY

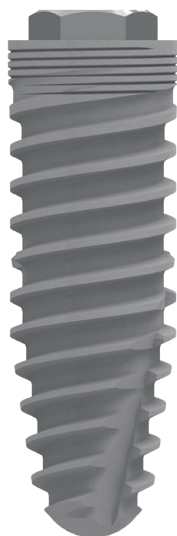
- Reduced-angle active threads.
- Double threaded.
- Self-tapping active apex.
- Perpendicular apical windows.
- Optimised morphology.
- Atraumatic apex.

CONICAL DESIGN

- Facilitates shaping in low density bone.
- Indicated for immediate loading.
- Indicated for cases of apical convergence and/or collapse.

Dental implants

ZM1



External hex prosthetic connection



Active apex

Surface treatment

Titansure
Titansure
Active

Implant with external hex connection

Ø DIAMETER	Ø PLATFORM	LENGTH (L)						
		6	7	8.5	10	11.5	13	14.5
NP 3.30	3.30							
RP 3.60	4.10							
RP 4.00								
RP 4.40								
WP 4.80	5.00							

Dimensions in mm.

IMPORTANT

For further information and recommendations for use, see the catalogue.

CONNECTION

- External hex connection
- Screw channel with upper guide

CORTICAL ZONE

- Microthread design
- Microthread extension.
- Macro-structure.

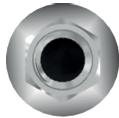
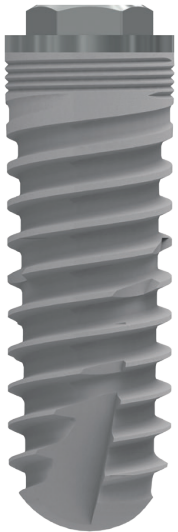
BODY

- Reduced-angle active threads
- Double threaded.
- Self-tapping active apex.
- Perpendicular apical windows.
- Optimised morphology.
- Atraumatic apex.

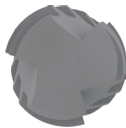
CONICAL DESIGN

- Facilitates shaping in low density bone.
- Indicated for immediate loading.
- Indicated for cases of apical convergence and/or collapse.

ZM4



External hex prosthetic connection



Active apex

Surface treatment

Titanasure

Implant with external hex connection

Ø DIAMETER	Ø PLATFORM	LENGTH (L)				
		8,5	10	11,5	13	14,5
NP 3,30	3,30					
RP 3,70	4,10					
RP 4,00						
RP 4,30						
WP 4,60	5,00					
WP 5,00						

Dimensions in mm.

IMPORTANT

For further information and recommendations for use, see the catalogue.

CONNECTION

- External hex connection
- Screw channel with upper guide

CORTICAL ZONE

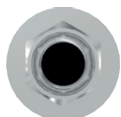
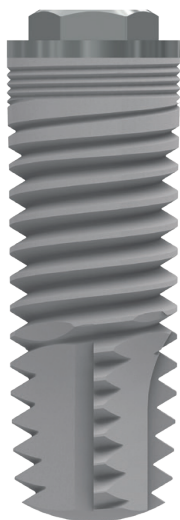
- Machined 0.4mm ring
- Microthread design
- Microthread extension.
- Macro-structure.

BODY

- Reduced-angle active threads
- Double threaded.
- Self-tapping active apex.
- Perpendicular apical windows.
- Optimised morphology.
- Atraumatic apex.

Dental implants

ZM8_N



External hex prosthetic connection



Active apex

Surface treatment

Titansure

Implant with external hex connection

Ø DIAMETER	Ø PLATFORM	LENGTH (L)			
		9	11	13	15
■ RP 3.75	4.10				
■ RP 4.00					
■ RP 4.30					

Dimensions in mm.

IMPORTANT

For further information and recommendations for use, see the catalogue.

CONNECTION

- External hex connection
- Screw channel with upper guide

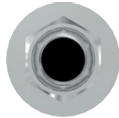
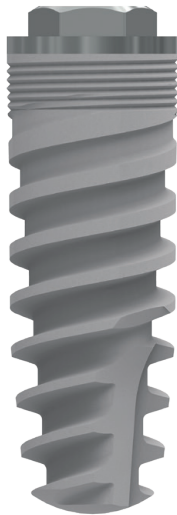
CORTICAL ZONE

- Machined 0.4mm ring
- Microthread design
- Microthread extension.
- Macro-structure.

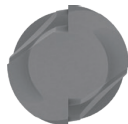
BODY

- Reduced-angle active threads
- Double threaded.
- Self-tapping active apex.
- Perpendicular apical windows.
- Optimised morphology.

ZM8s



External hex prosthetic connection



Active apex

Surface treatment

Titanasure

Implant with external hex connection

Ø DIAMETER	Ø PLATFORM	LENGTH (L)			
		9	11	13	15
RP 3.75	4.10				
RP 4.00					
RP 4.30					

Dimensions in mm.

IMPORTANT

For further information and recommendations for use, see the catalogue.

CONNECTION

- External hex connection
- Screw channel with upper guide

CORTICAL ZONE

- Machined 0.4mm ring
- Microthread design
- Microthread extension.
- Macro-structure.

BODY

- Reduced-angle active threads
- Double threaded.
- Self-tapping active apex.
- Perpendicular apical windows.
- Optimised morphology.

CONICAL DESIGN

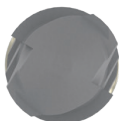
- Facilitates shaping in low density bone.
- Indicated for immediate loading.
- Indicated for cases of apical convergence and/or collapse.

Dental implants

ZMK



Kirator prosthetic connection



Active apex

Surface treatment

Titanasure

One-piece implant

Ø DIAMETER	Ø PLATFORM	LENGTH (L)		
		10	11.5	13
▲ RP 2.50	3.90			
▲ RP 2.80				

Dimensions in mm.

IMPORTANT

For further information and recommendations for use, see the catalogue.

MINIMALLY INVASIVE SURGERY

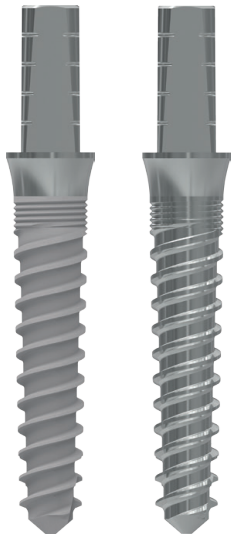
- Reduced drilling protocol
- One single, transmucosal, surgical stage
- The post-operative period is usually asymptomatic.
- No need for second surgical stage.
- Reduced diameter allows implantation in jawbones with limited dimensions.

PROSTHETIC SIMPLICITY

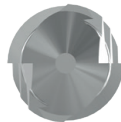
- Includes Kirator compatible abutment for overdentures (processing kit not included).
- No abutment screws

ZMR · ZMRs

One-piece implant



Prosthetic connection
for straight abutment



Active apex

Surface treatment

Titansure

ZMR **ZMRs**

MINIMALLY INVASIVE SURGERY

- Reduced drilling protocol
- One single, transmucosal, surgical stage
- The post-operative period is usually asymptomatic.
- No need for second surgical stage.
- Reduced diameter allows implantation in edentulous sections with limited mesiodistal space.

PROSTHETIC SIMPLICITY

- Drillable straight immediate abutment that facilitates impression-taking.
- No abutment screws

Ø DIAMETER	Ø PLATFORM	LENGTH (L)		
		10	11.5	13
▲ RP 2.50	3.00			
▲ RP 2.80				

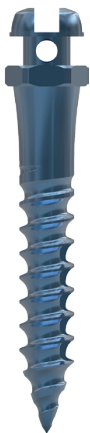
Dimensions in mm.

IMPORTANT

For further information and recommendations for use, see the catalogue.

Dental implants

DSQ_{CR}



UNDERCUT

- Round head to prevent tissue lacerations
- Slot to retain orthodontic accessories.
- 0.70 mm retention hole for wires and ligatures
- 2.50 mm hex base
- 2.50 mm transmucosal collar

BODY

- Tapered body with self-tapping thread.
- Length of active section: 7.00 and 9.00 mm

TIP

- Self-piercing tip

MANUFACTURING MATERIAL

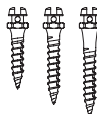
- Grade 5 ELI titanium (medical use) Ti 6Al 4V

DIAMETERS AND LENGTHS AVAILABLE

Lengths in mm

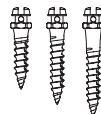
CR (Ø160mm)

7 9 9



CR (Ø1.80mm)

7 9 9

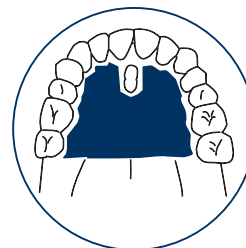
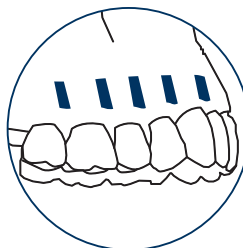


NOTE

DSQ CR 9.00 mm long orthodontic implants come in varieties with 1.00 or 2.50 mm transmucosal collar.

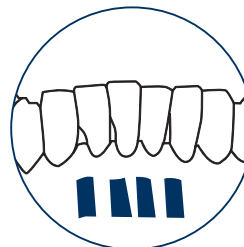
INTRA-ALVEOLAR USE

MAXILLARY BONE



■ MOST FREQUENT AREA

MANDIBULAR BONE

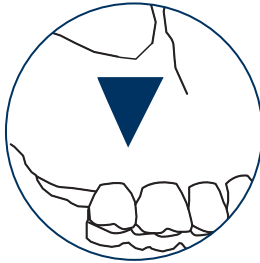


■ MOST FREQUENT AREA

DSQST

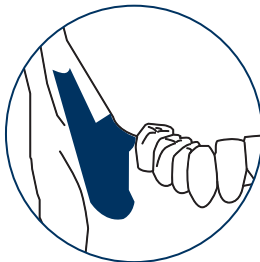
EXTRA-ALVEOLAR USE

MAXILLARY BONE



 MOST FREQUENT AREA

MANDIBULAR BONE



 MANDIBULAR BONE

UNDERCUT

- Button-type head to prevent tissue laceration.
- Retention area for use of orthodontics accessories.
- 0.70 mm retention hole for wires and ligatures
- 2.50 mm hex base
- 3.00 mm transmucosal collar

BODY

- 12 mm tapered body with self-tapping thread.

TIP

- Self-piercing tip

MANUFACTURING MATERIAL

- Grade 5 ELI titanium (medical use) Ti 6Al 4V



DIAMETERS AND LENGTHS AVAILABLE

Lengths in mm

ST (Ø180mm)



Expander kit

The Ziacom® Expander Kit offers dental professionals expanders in progressive diameters which can be used consecutively to compress and expand low-density bone and carry out split-crest procedures.

The morphology of our laser-marked, differentially designed expanders, in a wide range of shapes, sizes and types, makes the Ziacom Expander Kit a powerful ally of the dental surgeon.

General features of bone expanders








- Head compatible with 4x4 mm ratchet
- 14.5 mm long active section
- Thread design
- Optimised shape.
- Laser-marked expander
- Atraumatic tip



Specific features of the sinus augmentation expander

- With acute edges to facilitate compression of the cortical bone surrounding the sinus membrane and a concave centre to collect bone tissue, which reduces the risk of sinus membrane perforation.

Product codes and dimensions

BONE EXPANDERS							EXPANDERS FOR SINUS AUGMENTATION
CODE	1	2	3	4	5	6	7
EXPLANDERS KIT							
PROD. CODE	EOX100	EOX200	EOX300	EOX400	EOX500	EOX600	EOX700
END/NECK Ø	2.00 mm	2.35 mm	2.85 mm	3.10 mm	3.40 mm	3.80 mm	3.40 mm
TIP/APEX Ø	150 mm	180 mm	250 mm	2.35 mm	2.50 mm	2.70 mm	2.50 mm
INSTRUMENT LENGTH	23.40 mm	23.40 mm	23.40 mm	23.40 mm	23.40 mm	23.40 mm	23.40 mm
ACTIVE LENGTH	14.50 mm	14.50 mm	14.50 mm	14.50 mm	14.50 mm	14.50 mm	14.50 mm
APEX LENGTH	2.00 mm	2.00 mm	2.00 mm	2.00 mm	2.00 mm	2.00 mm	100 mm
TOTAL Ø	2.50 mm	2.85 mm	3.20 mm	3.55 mm	3.90 mm	4.25 mm	4.00 mm
IMPLANT Ø	NO FINAL	NO FINAL	3.30 mm	3.60/3.70 mm	4.00 mm	4.30/4.40 mm	4.00 mm

NOTE

- Before performing an augmentation procedure, always carry out an imaging study to assess, among other things, the state of the sinus membrane, length of the crest and anatomy of the maxillary sinus.
- The distance between the bone crest and sinus membrane should be at least 5.00 mm and over 4.00 mm thick.
- The sinus membrane can be elevated by a maximum of 4.00 mm. If this value is exceeded, it significantly increases the risk of sinus membrane perforation.
- A bone expander (prod. code EOX600) is required for the placement of 4.40 mm and 4.60 mm implants.
- Implants with a diameter over 4.60 mm are not recommended.
- Biomaterials should be used as filler in the maxillary sinus before placing the implant.

Regenerative

RE-BONE®

Cortico-spongy bone granules and spongy block of bovine origin



Characteristics

RE-BONE® is manufactured at a low temperature with an exclusive processing method, to guarantee stability and rapid "in vivo" remodelling. Fully resorbed in 6–8 months, it is indicated for:

- Alveolar preservation.
- Traumatic and atraumatic sinus lifting.
- Horizontal and vertical bone regeneration.
- Periodontal defects.
- "Tent Pole" and "Sandwich" regeneration techniques.
- Filling of cysts.

Why use RE-BONE®?

- ✓ Its porosity promotes osteogenesis, bone growth and integration of the implant after surgery.
- ✓ With a porous surface for maximum adhesion and cell proliferation
- ✓ Offers more trabecular space
- ✓ High calcium concentration
- ✓ Promotes rapid rehydration to allow immediate use

BIOMATERIALS			
CODE	DESCRIPTION	SIZE IN GR	SIZE IN CC
BMrebone01B	Cortico-spongy granules 0.5 g - 0.25-1 mm: box of 1	0.5 g	0.90 cc
BMrebone01C	Cortico-spongy granules 1 g - 0.25 - 1 mm: box of 1	1g	1.80 cc
BMrebone01D	Cortico-spongy granules 2 g - 0.25 - 1 mm: box of 1	2 g	3.60 cc
BMrebone01F	Cortico-spongy granules 1 g - 1 - 2 mm: box of 1	1g	1.90 cc
BMrebone01G	Cortico-spongy granules 2 g - 1 - 2 mm: box of 1	2 g	3.80 cc
BMrebone02A	Block - 10x10x10 mm (spongy)	-	-

SHELTER® SLOW

Resorbable bovine membrane

Characteristics

The SHELTER® SLOW resorbable membrane is available in three different thicknesses to offer a solution in the vast majority of clinical situations; **0.2 mm, 0.4 mm and 0.8 mm**. Indicated for:

- Alveolar preservation.
- Sinus lift.
- Periodontal treatment.
- Horizontal and vertical regeneration.
- Ridge augmentation around implants.



SLOW MEMBRANES

CODE	DESCRIPTION	DIMENSIONS	THICKNESS	TYPE
BMSPshelter05A	Pericardial membrane 15x20x0.2 mm SLOW	15x20x0.2 mm	0.2 mm	SLOW
BMSPshelter05D	Pericardial membrane 15x20x0.4 mm SLOW	15x20x0.4 mm	0.4 mm	SLOW
BMSPshelter05G	Pericardial membrane 15x20x0.8 mm SLOW	15x20x0.8mm	0.8 mm	SLOW
BMSPshelter05E	Pericardial membrane 30x25x0.4 mm SLOW	30x25x0.4 mm	0.4 mm	SLOW
BMSPshelter05H	Pericardial membrane 15x20x0.8 mm SLOW	30x25x0.8 mm	0.8 mm	SLOW
BMSPshelter05F	Pericardial membrane 15x20x0.4 mm SLOW	50x30x0.4 mm	0.4 mm	SLOW
BMPPshelter05I	Pericardial membrane 50x30x0.8 mm SLOW	50x30x0.8 mm	0.8 mm	SLOW

Why use SHELTER® SLOW?

- ✓ Its precise consistency makes it easy to handle
- ✓ High resistance to traction
- ✓ High elasticity
- ✓ Prevents the direct passage of bacteria and epithelial cells

Regenerative

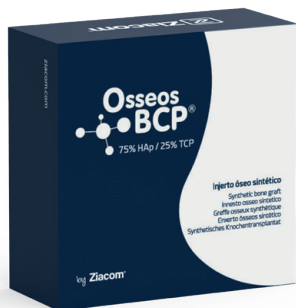
Bone substitutes

Our Osseos synthetic grafts are designed to fill bone defects and induce bone regeneration and growth, stimulating the proliferation and differentiation of osteoblasts. Its highly interconnected porosity provides excellent mechanical strength. Also, Osseos products have excellent flexibility, seamless osseointegration and osteoconduction and exceptional bioactivity.

Why choose Osseos?

- ✓ 100% synthetic and resorbable
- ✓ High cohesion
- ✓ Radiopaque
- ✓ High vascularisation

BCP synthetic bone graft

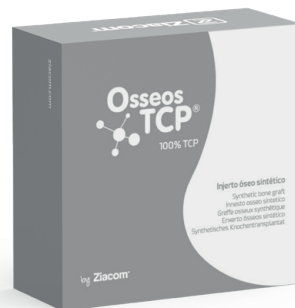


Characteristics

- Composition: 75% hydroxyapatite (HA), 25% tricalcium phosphate (β -TCP).
- Resorption: OsseosBCP® is replaced by high-quality new bone in 6 to 24 months.
- Stable volume: The hydroxyapatite portion of the OsseosBCP® prevents excessive resorption, preserving tissue volume for longer.

Reference	Geometry	Size	Amount
<u>OEB010505G</u>	Granules	0.1 - 0.5 mm	0.5 g./1 unit
<u>OEB050110G</u>	Granules	0.5 - 1 mm	1.0 g./1 unit

TCP synthetic bone graft



Characteristics

- Composition: 100% tricalcium phosphate (β -TCP).
- Resorption: OsseosTCP® is replaced by high-quality new bone in 1 to 6 months.

Reference	Geometry	Size	Amount
<u>OET010505G</u>	Granules	0.1 - 0.5 mm	0.5 g./1 unit
<u>OET050110G</u>	Granules	0.5 - 1 mm	1.0 g./1 unit

Membranes

Ziacom® membranes are fully biocompatible and resorbable and are indicated particularly in Guided Bone Regeneration (GBR) and Guided Tissue Regeneration (GTR) techniques,

T-Gen®

Resorbable collagen membrane



Characteristics

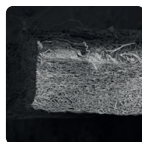
Resorbable collagen membrane of porcine origin. It can be used with bone grafts or be attached directly to the defect area. The T-Gen® membrane is specifically indicated for use on the following clinical situations:

- Post-extraction alveolar regeneration.
- Implant site preparation.
- Preservation of the alveolar ridge.
- Treatment of fenestration defects.
- Sinus augmentation.
- Protection of the sinus membrane against tears.

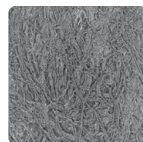
Why choose T-Gen®?

- ✓ Excellent manipulability
- ✓ Excellent stability
- ✓ Improved tissue integration.

Reference	Size
TG-1	15x20mm
TG-2	20x30mm



T-Gen® SEM cross section



T-Gen® SEM surface

Zellplex®

PLGA resorbable synthetic membrane



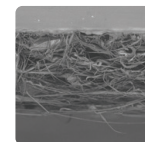
Characteristics

Zellplex® is a polylactic-glycolic acid (PLGA) synthetic membrane that is biocompatible and fully resorbable. Zellplex® has a specially designed dual-layer structure, which avoids internal growth of epithelial tissue while promoting cellular infiltration, which induces bone regeneration.

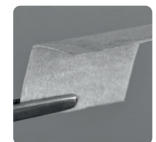
Why choose Zellplex®?

- ✓ A synthetic alternative
- ✓ Complete resorption in 6 months.
- ✓ Single shape memory
- ✓ Exceptional adhesion to tissue.

Reference	Size
ZP1520	15x20mm
ZP2030	20x30mm



Zellplex® Cross Section. SEM



Zellplex® Bilayered membrane





Regenerative

Fixation pin Zs1

Ziacom Ziasure® ZS1 fixation pins have been developed to be used in guided bone regeneration (GBR) procedures. Their main function is the securing of membranes, both resorbable and non-resorbable.

The ZS1 Ziasure fixation pin provides immobilisation of the membrane, which promotes and improves predictability in bone regeneration processes.

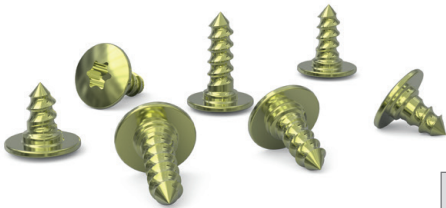


		REFERENCES					
		DIAMETER	LENGTH	HEAD Ø	ANODISED	5 UNITS	10 UNITS
Ziasure ZS1 Fixation pin - Short		0.70	3.30	2.50		PS3305	PS3310
Ziasure ZS1 Fixation pin - Long		1.10	5.50			PS5505	PS5510

Dimensions in mm. **IMPORTANT:** Ziasure ZS1 fixation pins are supplied non-sterile.

Short bone fixation screw Zs2

Ziacom® Ziasure ZS2 fixation screws are designed to be used in guided bone regeneration (GBR) procedures as devices for securing and immobilisation of bone or soft tissue grafts, resorbable and non-resorbable membranes.



						REFERENCES	
						5 UNITS	10 UNITS
		DIAMETER	LENGTH	HEAD Ø	ANODISED		
Ziasure ZS2 short bone fixation screw		150	3.00	3.80		PS150305	PS150300
			4.00			PS150405	PS150400
			5.00			PS150505	PS150500

Dimensions in mm. **IMPORTANT:** Ziasure ZS2 fixation pins are supplied non-sterile.

Equipment

Bien Air

Chiropro and Chiropro PLUS



Superb grip, balance and control

› **Absolute precision.**

The high-precision electronic system avoids additional calibration; the single control pedal and the ergonomic handpieces aid control.

› **Reliability in surgery.**

The operation sequences are preprogrammed, so you can perform your procedures in minimum time and be assured that you will obtain optimum results.

› **Intuitive interface.**

The single control button and the simplicity of the screen aid navigation. Access all the information you need for the procedure at a glance.

› **Easy to clean.**

All components can be easily removed for sterilisation.

› **With MX-i LED micromotor.**

The only player on the market that provides LED lighting of the same intensity regardless of the speed at which you are working.

NSK

Surgic PRO2

Unparalleled operability, safety and wireless connectivity

› **Improved operability.**

More comfort and less fatigue thanks to the centre of gravity that is near the head of the handpiece.

› **Sensitive and reliable display.**

The screen is very easy to clean and the touchpad has been designed to respond even when wearing surgical gloves.

› **High-resolution colour LED light.**

Better visibility during every procedure, generating minimum heat.

› **Wireless connection and control pedal.**

The wireless control pedal improves reach, is lightweight and can be customised to the preferences of the professional. System compatible with most devices.

› **Maximum torque precision.**

The advanced NSK AHC calibration system offers maximum safety for implant placement.



Equipment

Medit

Medit i700



Value, efficiency and productivity.

- › Faster and lighter; 180° reversible tips
- › Plug & Scan feature
- › Always up to date
- › Cloud-based system
- › Smart colour filtering and scanning

Medit i600



Realism, convenience and high-resolution.

- › Broad scanning area
- › Comfortable and straightforward scanning
- › Improved speed
- › Full arch accuracy
- › Smart shade guide

Medit i700w



Power, accuracy and freedom.

- › Powerful hardware
- › Wireless
- › 180° rotating tips
- › Long-lasting battery
- › Software updates

Medit T710



Superfast
Scanning



High
Accuracy



Open
System



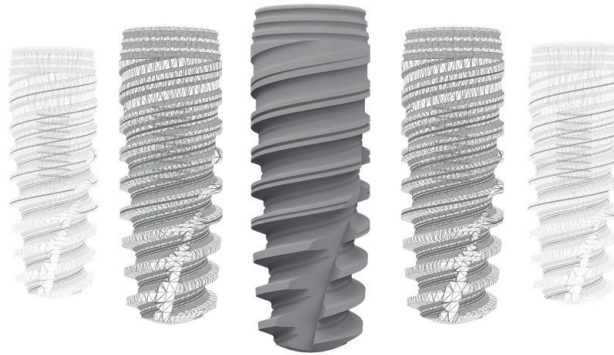
High-resolution
Cameras



Auto-elevation



Together for **health**



See the latest version of the general conditions of sale on our website www.ziacom.com.

Check the availability of each product in your country.

All rights reserved. No part of this document may be reproduced or stored in any medium or reproduction system, nor transmitted in any way or under any concept, electronically, mechanically, in photocopies, recording or any other mean not considered here without the permission of holder of the copyright, editing and printing. Ziacom® is a registered trademark of Ziacom Medical SL.

See the latest version of the catalogues available at www.ziacom.com.



EN | ENGLISH

 **Ziacom**[®]



www.ziacom.com

Ziacom Medical SL

Calle Búhos, 2
28320 Pinto - Madrid - ESPAÑA
Tfno.: +34 91 723 33 06
info@ziacom.com

Ziacom Medical Portugal Lda

Av. Miguel Bombarda, 36 - 5° B
1050 -165 - Lisboa - PORTUGAL
Tel: +351 215 850 209
info.pt@ziacom.com

Ziacom Medical USA LLC

333 S.E 2nd Avenue, Suite 2000
Miami, FL 33131 - USA
Phone: +1 (786) 224 - 0089
info.usa@ziacom.com